

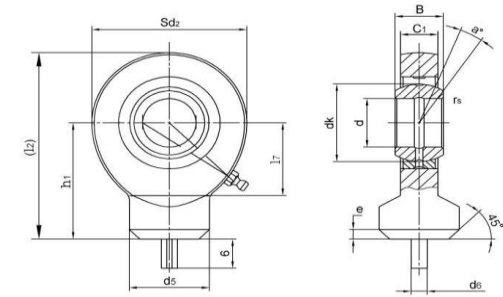
# TS-C Series Hydraulic Rod Ends - Weld On Housings (Maintenance required - Steel / Steel)



**Bearing:** GE-ES Series, 100Cr6 Bearing Steel, Hardened and Phosphated, sliding surface treated with MoS2

**Lubrication:** Via grease nipple. (Steel/Steel)

**Housing:** Nodular Cast Iron



Part Number	Dimensions												Load Ratings		Weight (kg)
	d	B	dk	C1	d2	d5	d6	h1	e	l7	(l2)	a°	Dynamic	Static	
TS20C	20	16	29	13	53	27.5	4	38	2.5	27	64.5	9	30	54	0.26
TS25C	25	20	35.5	17	64	33.5	4	45	3	32	77	7	48	72	0.45
TS30C	30	22	40.7	19	73	40	4	51	3	37	87.5	6	62	95	0.07
TS35C	35	25	47	21	82	47	4	61	3	42	102	6	79	125	1.02
TS40C	40	28	53	23	92	52	4	69	4	48	115	7	99	156	1.04
TS45C	45	32	60	27	102	58	6	77	5	52	128	7	127	208	1.93
TS50C	50	35	66	30	112	62	6	88	5	60	144	6	156	250	2.68
TS60C	60	44	80	38	135	70	6	100	5	75	167.5	6	245	390	4.60
TS70C	70	49	92	42	160	80	6	115	6	87	195	6	313	510	7.00
TS80C	80	55	105	47	180	95	6	141	6	100	231	6	400	620	11.00